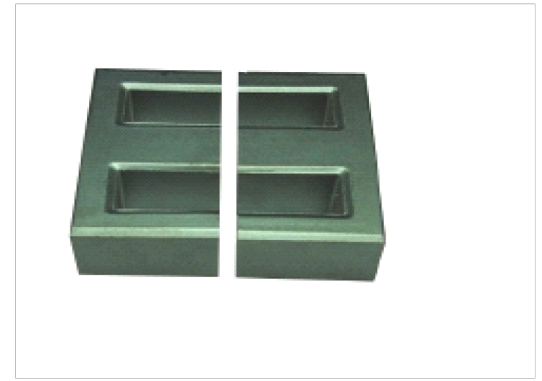
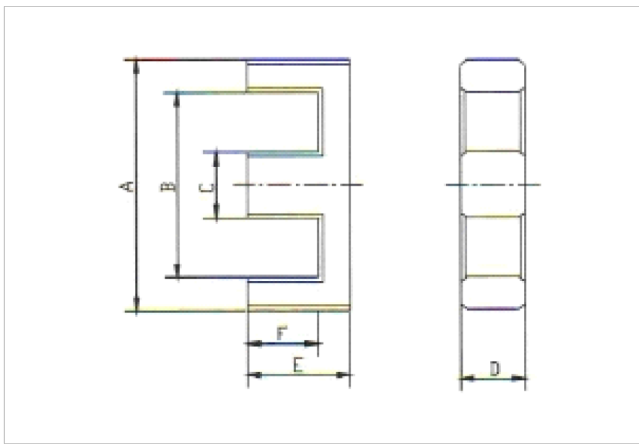
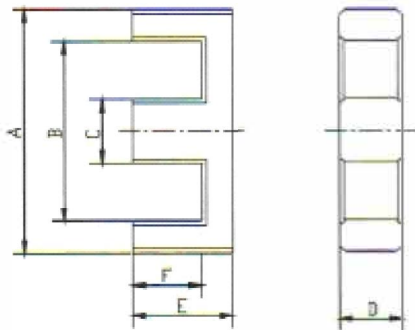


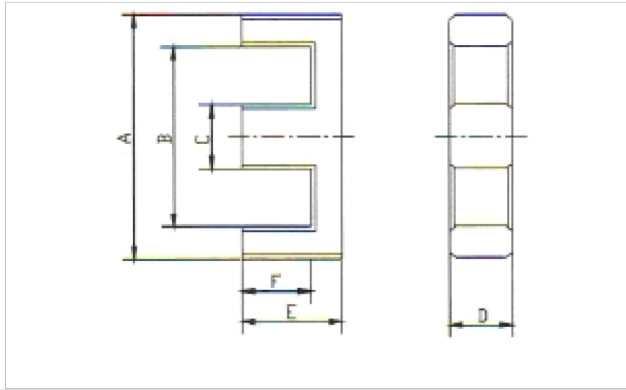
型号 Type		EE8/4/4	EE8.3/4/4	EE10/5.5/5	EE10.2/6/5	EE10.5/6/5	EE10/6/10
尺寸 Dimension (mm)	A	8.30±0.20	8.30±0.30	10.20±0.30	10.20±0.3	10.5±0.2	10.2±0.3
	B	6.00min	6.00min	7.80 min	7.5min	8min	7.5min
	C	1.85±0.15	2.00±0.2	2.50±0.20	2.40±0.2	2.4±0.2	2.5±0.2
	D	3.80±0.20	3.90±0.2	4.85±0.20	5.00±0.3	5.0±0.15	9.8±0.2
	E	4.20±0.15	4.25±0.2	5.50±0.20	5.80±0.2	5.8±0.15	5.8±0.2
	F	3.10±0.15	3.25±0.2	4.30±0.20	4.40±0.2	4.4±0.2	4.4±0.2
磁芯常数 $C1(\text{mm}^{-1})$ Core Factor		2.57	2.35	2.27	2.42	2.42	1.05
有效磁路长度 $Le(\text{mm})$ Effective Length Le		19.51	19.2	26.34	25.1	25.1	26.1
有效截面积 $Ae(\text{mm}^2)$ Effective Area		7.58	8.15	11.61	10.3	10.3	24.9
有效体积 $Ve(\text{mm}^3)$ Effective Volume		147.84	156.4	305.87	261.3	261.3	648.3
重量 Weight(g)		0.9	0.92	1.5	1.8	1.85	3.00
电感系数 $AL (\text{nH}/\text{N}^2)$	PC40	610±25%	675±25%	810±25%	950±25%	950±25%	1900±25%
	PC44	270±25%		900±25%			
	TY-5K						
	TY-7K						
	TY-10K	640±25%		2300±30%			
	TY-15K						



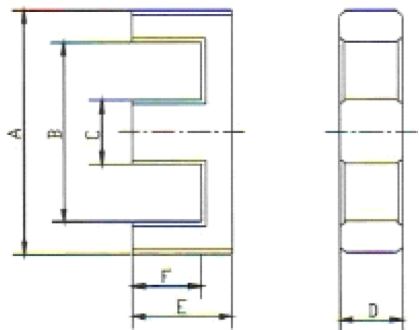
型号 Type		EE11.5/6/5	EE12.7/6/3.5	EE13/4.5/7	EE13/6/6	EE13/6.5/6	EE13/6/6
尺寸 Dimension (mm)	A	11.50±0.2	12.70±0.30	13.00±0.30	13.00±0.30	13.2±0.2	13.20±0.30
	B	8.70min	9.05min	9.50min	10.00min	10.10min	10.00 min
	C	2.45±0.15	3.55±0.20	2.70±0.20	2.75±0.20	3.10±0.15	2.60±0.20
	D	4.75±0.20	3.55±0.30	7.00±0.20	6.00±0.20	6.20±0.20	5.90±0.30
	E	5.75±0.20	6.40±0.20	4.50±0.20	6.40±0.20	6.50±0.15	6.40±0.20
	F	4.20±0.15	3.55±0.30	2.80±0.20	4.65±0.20	4.90±0.15	4.90±0.20
磁芯常数 $C1(\text{mm}^{-1})$ Core Factor		2.12	2.38	2.42	1.76	1.63	1.92
有效磁路长度 $L_e(\text{mm})$ Effective Length L_e		27.3	30.2	30.6	26	31.5	30.88
有效截面积 $A_e(\text{mm}^2)$ Effective Area		12.86	12.7	10.5	17.3	19.4	16.08
有效体积 $V_e(\text{mm}^3)$ Effective Volume		351	386.1	547.9	300	611.9	496.7
重量 Weight(g)		1.8	2.1	2.7	2.6	2.9	2.7
电感系数 $AL(\text{nH}/\text{N}^2)$	PC40	1000±25%	810±25%	950±25%	1000±25%	1150±25%	1100±25%
	PC44						1200±25%
	TY-5K						1900±25%
	TY-7K						2500±25%
	TY-10K						2900±30%
	TY-15K						



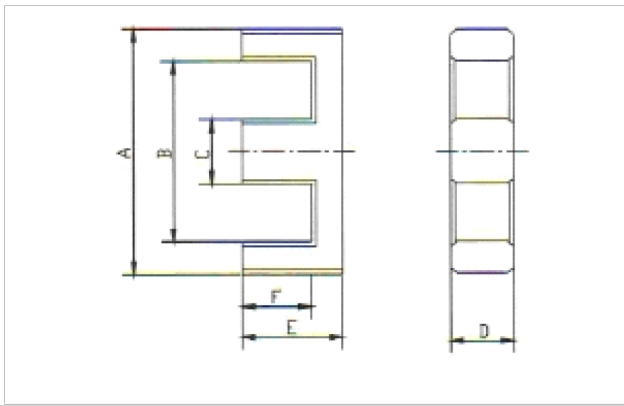
型号 Type		EE13.5/6/6	EE13/7/6	EE13/6.5/10	EE16/6.5/5	EE16/7/5	EE16.5/7/5
尺寸 Dimension (mm)	A	13.50±0.20	13.30±0.30	13.00±0.30	16.00±0.30	16.00±0.30	16.50±0.30
	B	10.50min	10.10min	9.30min	12.00min	11.70min	12.20min
	C	2.75±0.20	2.75±0.15	3.00±0.30	3.80±0.20	3.90±0.20	3.90±0.20
	D	6.10±0.20	6.00±0.20	9.80±0.20	4.80±0.20	4.80±0.20	4.80±0.20
	E	6.00±0.20	6.80±0.15	6.50±0.20	6.50±0.20	7.40±0.20	7.40±0.20
	F	4.65±0.25	5.50±0.20	4.80±0.30	4.40±0.20	5.40±0.20	5.40±0.20
磁芯常数 C1(mm ⁻¹) Core Factor		1.76	2.12	1.2	1.67	1.73	1.84
有效磁路长度 Le(mm) Effective Length Le		30.6	34.6	29.8	32.1	34.4	36.2
有效截面积 Ae(mm ²) Effective Area		17.3	16.2	35.6	19.2	19.8	19.6
有效体积 Ve(mm ³) Effective Volume		547.9	560.5	1062	615.9	682.9	710.7
重量 Weight(g)		2.8	2.8	2.9	3.2	3.3	3.5
电感系数 AL (nH/N ²)	PC40	1000±25%	900±25%	2300±25%	1120±25%	1100±25%	1100±25%
	PC44						
	TY-5K						
	TY-7K						
	TY-10K						
	TY-15K						



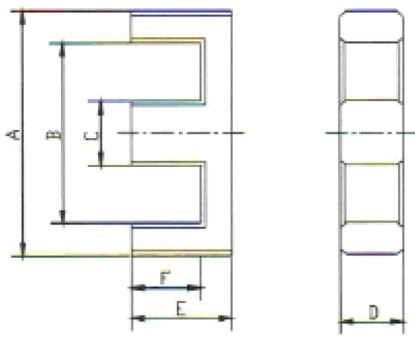
型号 Type		EE16/6/6	EE16/7.5/6.5	EE16/6/7	EE16/7/5	EE16/8/4.5	EE16/8/8
尺寸 Dimension (mm)	A	16.00±0.30	16.00±0.30	16.10±0.30	16.00±0.60	16.00±0.60	16.10±0.50
	B	11.50min	11.70min	11.30min	11.70 min	11.80 min	11.30min
	C	4.55±0.15	4.00±0.20	4.55±0.15	4.00±0.30	4.50±0.20	4.55±0.15
	D	6.00±0.20	6.50±0.30	7.20±0.20	4.80±0.30	4.50±0.20	8.15±0.25
	E	6.40±0.20	7.50±0.30	6.00±0.20	7.40±0.20	8.10±0.20	8.20±0.20
	F	4.20±0.20	5.40±0.30	3.85±0.15	5.20±0.20	6.00±0.20	6.00±0.15
磁芯常数 $C_1(\text{mm}^{-1})$ Core Factor		1.15	1.48	0.92	1.85	1.94	1.03
有效磁路长度 $L_e(\text{mm})$ Effective Length L_e		30.8	35.5	29.4	35.01	37.93	37.6
有效截面积 $A_e(\text{mm}^2)$ Effective Area		26.9	24.0	31.9	18.88	19.52	36.3
有效体积 $V_e(\text{mm}^3)$ Effective Volume		827	855.2	938	660.87	740.48	1365
重量 Weight(g)		4.0	4.5	4.8	3.3	3.7	6.9
电感系数 $AL(\text{nH/N}^2)$	PC40	1900±25%	1254±25%	1900±25%	1100±25%	1100±25%	1940±25%
	PC44				1220±25%		
	TY-5K				2050±25%		
	TY-7K				2600±25%		
	TY-10K				3200±30%		
	TY-15K						



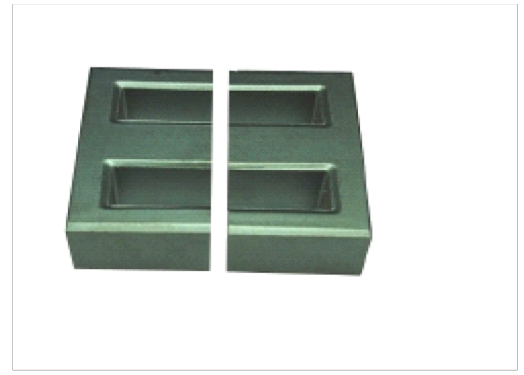
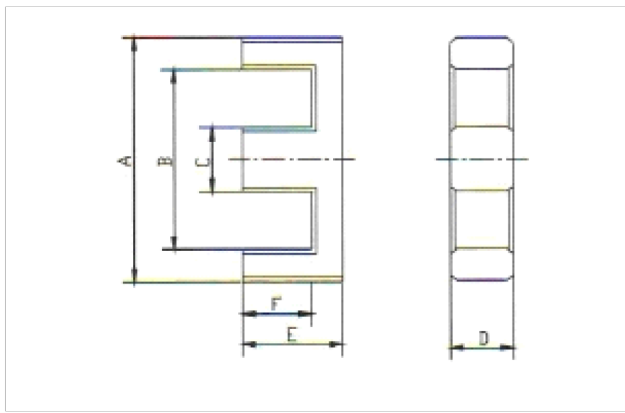
型号 Type		EE16/8/10	EE16/9/5	EE17/7/5	EE17.5/8/5	EE19/8/5	EE19/8/5
尺寸 Dimension (mm)	A	16.00±0.30	16.20±0.30	16.90±0.30	17.60±0.20	19.10±0.40	19.10±0.30
	B	11.70min	12.00min	12.80min	13.30min	14.20min	14.20min
	C	4.00±0.20	3.80±0.15	4.00±0.15	4.00±0.15	4.55±0.20	5.10±0.20
	D	9.80±0.20	5.00±0.20	4.90±0.20	4.90±0.20	4.90±0.20	5.10±0.20
	E	7.70±0.30	9.00±0.20	7.40±0.20	7.60±0.20	8.20±0.20	8.20±0.20
	F	5.50±0.20	7.00±0.20	5.40±0.20	5.40±0.20	5.90±0.20	5.90±0.20
磁芯常数 $C_1(\text{mm}^{-1})$ Core Factor		0.87	2.12	2.05	1.82	1.68	1.62
有效磁路长度 $L_e(\text{mm})$ Effective Length L_e		36.4	42.5	38.8	36.7	39.5	40.2
有效截面积 $A_e(\text{mm}^2)$ Effective Area		41.7	19.9	18.9	20.7	22.8	24.8
有效体积 $V_e(\text{mm}^3)$ Effective Volume		1518	846	735	777	914	996
重量 Weight(g)		7.3	4.1	3.6	3.8	4.5	5.5
电感系数 $AL (\text{nH}/\text{N}^2)$	PC40	2150±25%	1100±25%	1100±25%	1100±25%	1180±25%	1300±25%
	PC44						
	TY-5K						
	TY-7K						
	TY-10K						
	TY-15K						



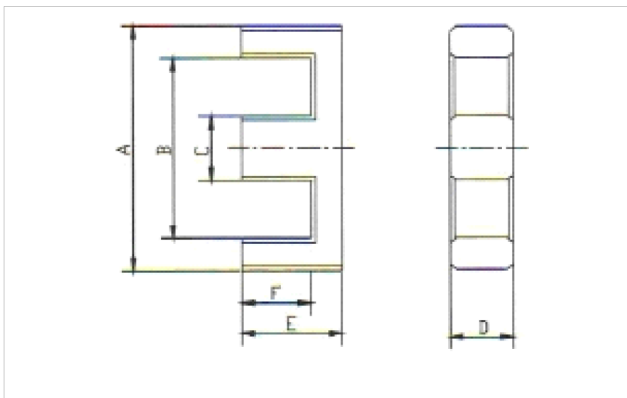
型号 Type		EE19/7.5/5.5	EE19/8/6.5	EE19/8/5	EE19/8/10	EE20/8/10	EE20/11/7
尺寸 Dimension (mm)	A	19.30±0.30	19.10±0.40	19.00±0.40	19.10±0.40	20.00±0.30	20.50±0.70
	B	13.50min	14.20min	14.50 min	14.20min	15.80min	13.50min
	C	5.65±0.15	4.55±0.20	4.85±0.25	4.55±0.20	4.55±0.20	5.00±0.30
	D	5.50±0.20	6.50±0.20	4.85±0.25	9.80±0.20	9.90±0.20	7.00±0.30
	E	7.50±0.20	8.20±0.20	8.10±0.20	8.20±0.20	8.20±0.20	10.70±0.30
	F	4.55±0.20	5.90±0.20	5.70±0.20	5.90±0.20	5.90±0.20	7.00±0.20
磁芯常数 $C_1(\text{mm}^{-1})$ Core Factor		1.11	1.6	1.75	0.88	0.95	1.21
有效磁路长度 $L_e(\text{mm})$ Effective Length L_e		35.17	40.0	39.65	40.5	41.9	47.1
有效截面积 $A_e(\text{mm}^2)$ Effective Area		31.81	25.0	22.69	45.8	44.0	39.0
有效体积 $V_e(\text{mm}^3)$ Effective Volume		1118.9	1200	899.70	1857.1	1840	1840
重量 Weight(g)		5.8	6.2	4.6	9.5	9.5	10
电感系数 $AL (\text{nH}/\text{N}^2)$	PC40	1800±25%	1500±25%	1200±25%	2000±25%	1900±25%	1900±25%
	PC44						
	TY-5K						
	TY-7K						
	TY-10K						
	TY-15K						



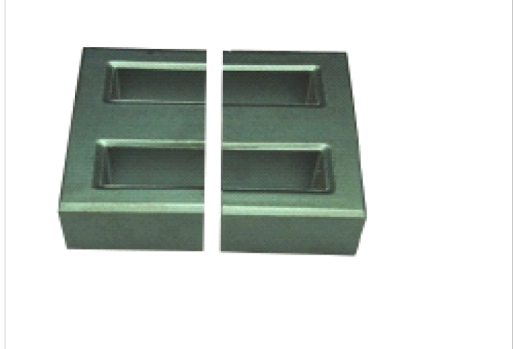
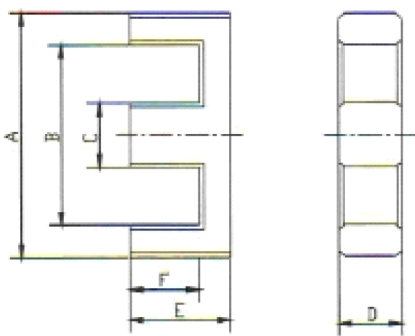
型号 Type		EE20/9/6.5	EE22/10/6	EE22/9/6	EE22/15/6	EE25/10/6	EE25/9/6.5
尺寸 Dimension (mm)	A	20.00±0.50	22.00±0.40	22.00±0.50	22.00±0.50	25.40±0.50	25.40±0.50
	B	14.20min	15.60 min	15.60min	15.75,min	18.70 min	19.05±0.50
	C	4.80±0.3	5.75±0.25	5.75±0.30	5.75±0.30	6.35±0.30	6.35±0.25
	D	6.50±0.20	5.75±0.25	5.70±0.30	5.75±0.25	6.35±0.30	6.50±0.30
	E	9.40±0.20	9.90±0.20	9.20±0.20	14.70±0.30	10.00±0.25	9.35±0.20
	F	6.80±0.20	5.80±0.20	5.40±0.20	10.70±0.30	6.70±0.25	6.60±0.20
磁芯常数 C1(mm ⁻¹) Core Factor		1.31	1.19	0.96	1.93	1.26	1.22
有效磁路长度 Le(mm) Effective Length Le		44.6	43.75	39.8	63.2	50.21	48.4
有效截面积 Ae(mm ²) Effective Area		33.9	36.91	41.0	32.7	39.77	39.7
有效体积 Ve(mm ³) Effective Volume		1510	1614.67	1620	2065.3	1997.21	1921
重量 Weight(g)		7.5	7.5	8.5	12.3	10.1	10
电感系数 AL (nH/N ²)	PC40	1750±25%	1800±25%	1900±25%	1300±25%	1800±25%	1900±25%
	PC44						
	TY-5K						
	TY-7K						
	TY-10K						
	TY-15K						



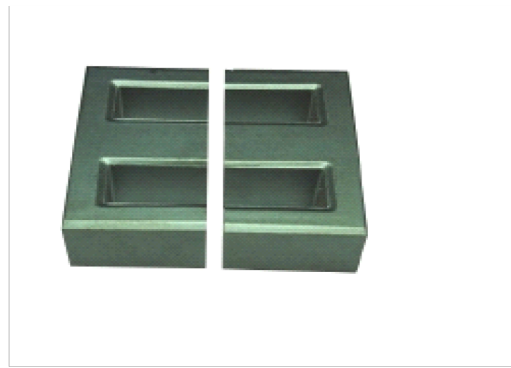
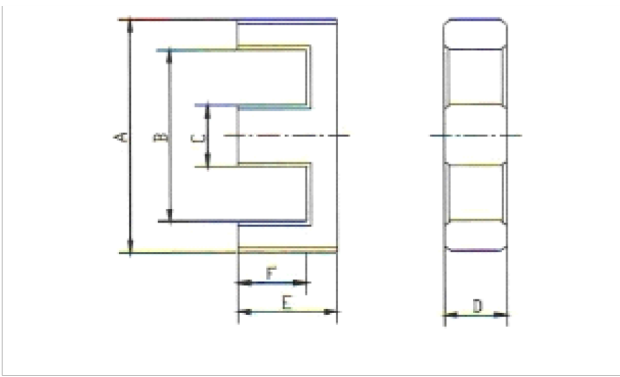
型号 Type		EE25/10/6	EE25/10/6	EE25/7/7	EE28/10/10	EE28/10.5/11	EE28/10/11
尺寸 Dimension (mm)	A	25.00±0.50	25.40±0.50	25.40±0.50	28.50±0.50	28.00±0.50	28.50±0.50
	B	18.60min	19.00min	19.00min	20.50 min	19.00±0.40	20.40 min
	C	5.80±0.20	6.40±0.30	6.40±0.30	7.15±0.30	7.20±0.30	7.20±0.30
	D	6.10±0.30	6.40±0.30	6.80±0.30	10.40±0.20	10.70±0.30	10.60±0.30
	E	9.80±0.30	10.00±0.30	6.80±0.30	10.00±0.30	10.50±0.20	10.20±0.30
	F	6.80±0.30	6.80±0.30	10.00±0.30	6.80±0.30	6.45±0.20	6.30±0.20
磁芯常数 $C_1(\text{mm}^{-1})$ Core Factor		1.3	1.24	1.15	0.67	0.56	0.58
有效磁路长度 $L_e(\text{mm})$ Effective Length L_e		49.4	49	49.9	52.44	50.1	50.8
有效截面积 $A_e(\text{mm}^2)$ Effective Area		36.9	40	43.5	78.55	89.2	87.7
有效体积 $V_e(\text{mm}^3)$ Effective Volume		1823	1930	2170	4119.04	4469.9	4453
重量 Weight(g)		8.6	10	11.2	21	22	22.5
电感系数 $AL (\text{nH}/\text{N}^2)$	PC40	1500±25%	1800±25%	2000±25%	2600±25%	4210±25%	4210±25%
	PC44						
	TY-5K						
	TY-7K						
	TY-10K						
	TY-15K						



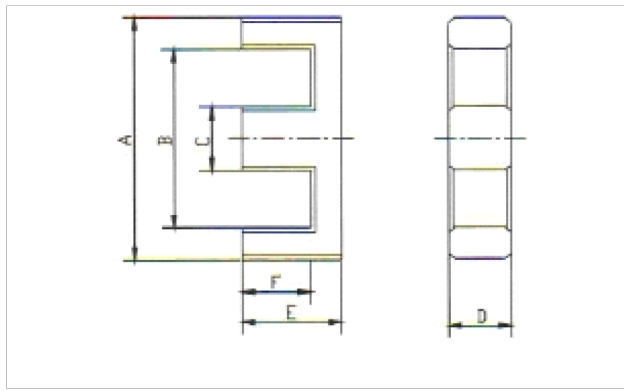
型号 Type		EE28/11/12	EE28/14/10	EE28/17/11	EE30/13/11	EE30/15/7	EE30/15/7
尺寸 Dimension (mm)	A	28.00±0.50	28.50±0.40	28.00±0.50	30.00±0.60	30.00±0.60	30.00±0.60
	B	19.00±0.40	20.10min	18.60min	19.70 min	20.50 min	19.50min
	C	7.20±0.30	7.20±0.20	7.20±0.30	10.70±0.20	6.95±0.25	6.95±0.25
	D	12.00±0.30	10.00±0.25	10.60±0.30	10.70±0.20	7.05±0.25	7.05±0.25
	E	10.70±0.20	14.20±0.20	16.75±0.30	13.00±0.30	15.00±0.20	15.00±0.30
	F	6.20±0.20	9.90±0.20	12.25±0.30	8.15±0.20	10.00±0.30	10.00±0.30
磁芯常数 $C1(\text{mm}^{-1})$ Core Factor		0.49	0.92	0.82	0.54	1.15	1.11
有效磁路长度 $L_e(\text{mm})$ Effective Length L_e		49.7	73.2	70.6	57.70	66.86	66.0
有效截面积 $A_e(\text{mm}^2)$ Effective Area		99.7	79.2	86.1	107.36	58.12	60.0
有效体积 $V_e(\text{mm}^3)$ Effective Volume		4952.2	5280	6077.4	6195.04	3886.14	3950
重量 Weight(g)		24.0	21	3.5	32	21	22
电感系数 $AL (\text{nH}/\text{N}^2)$	PC40	4500±25%	2800±25%	2930±25%	3500±25%	1950±25%	2000±25%
	PC44						
	TY-5K						
	TY-7K						
	TY-10K						
	TY-15K						



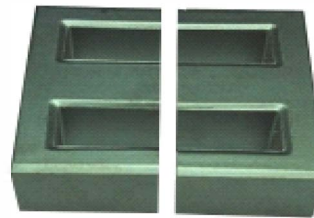
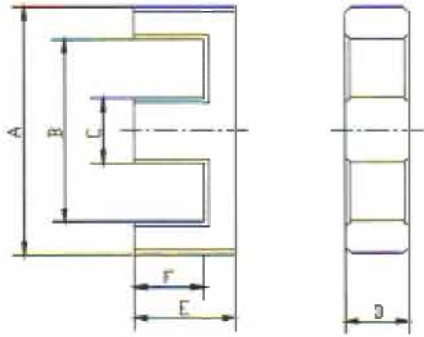
型号 Type		EE33/14/13	EE35/19/19	EE40/10/11.5	EE42/15/15	EE42/15/20	EE55/19/17
尺寸 Dimension (mm)	A	33.40±0.60	35.00±0.70	40.00±0.70	42.15±0.85	42.15±0.85	55.15±1.05
	B	24.10 min	25.60min	26.80 min	29.5 0min	29.5 0min	37.5 0min
	C	9.70±0.30	9.50±0.30	11.60±0.30	11.85±0.35	11.85±0.35	16.95±0.25
	D	12.70±0.30	19.00±0.30	11.60±0.30	14.85±0.35	19.85±0.35	16.75±0.25
	E	13.85±0.25	19.05±0.20	10.30±0.30	15.10±0.30	15.10±0.30	18.90±0.41
	F	9.45±0.25	23.80±0.20	17.30±0.30	21.20±0.40	21.20±0.40	27.50±0.30
磁芯常数 $C1(\text{mm}^{-1})$ Core Factor		0.59	0.6	0.53	0.6	0.4	0.44
有效磁路长度 $L_e(\text{mm})$ Effective Length L_e		66.87	107.7	77.28	97.8	97.8	124
有效截面积 $A_e(\text{mm}^2)$ Effective Area		113.69	180.1	145.74	180	235	282
有效体积 $V_e(\text{mm}^3)$ Effective Volume		7602.82	19401	11262.77	17600	23000	34900
重量 Weight(g)		39	94.5	56	86	115	182
电感系数 $AL (\text{nH}/\text{N}^2)$	PC40	3700±25%	4500±25%	4000±25%	4280±25%	5670±25%	4850±25%
	PC44						
	TY-5K						
	TY-7K						
	TY-10K						
	TY-15K						



型号 Type		EE55/19/21	EE65/23/20	EE65/23/27	EE70/23/32	EE85/29/27	EE85/29/32
尺寸 Dimension (mm)	A	55.15±1.05	65.00±1.20	65.00±1.20	70.00±1.50	85.00±1.50	85.00±1.50
	B	37.50 min	44.20 min	44.20 min	48.00 min	55.00 min	55.00 min
	C	16.95±0.25	19.60±0.70	19.60±0.70	21.50±0.50	26.80±0.50	26.80±0.50
	D	20.75±0.25	20.00±0.60	27.00±1.00	32.00±0.60	26.50±0.50	31.50±0.50
	E	18.90±0.40	22.60±0.60	22.60±0.60	23.00±0.50	29.00±1.50	29.00±1.50
	F	27.50±0.30	32.50±0.60	32.50±0.60	33.00±0.60	43.00±1.00	43.00±1.00
磁芯常数 $C_1(\text{mm}^{-1})$ Core Factor		0.355	0.365	0.271	0.226	0.264	0.220
有效磁路长度 $L_e(\text{mm})$ Effective Length L_e		124	146	147	150	188	189
有效截面积 $A_e(\text{mm}^2)$ Effective Area		349	401	542	665	714	859
有效体积 $V_e(\text{mm}^3)$ Effective Volume		43200	58668	79800	99800	134000	162000
重量 Weight(g)		225	300	405	506	722	858
电感系数 $AL(\text{nH}/\text{N}^2)$	PC40	6000±25%	7200±25%	7300±25%	8600±25%	7630±25%	10000±25%
	PC44						
	TY-5K						
	TY-7K						
	TY-10K						
	TY-15K						



型号 Type		EE110/37/40	EE130/45/40	EE160/52/40	EE186/48/30	EE195/50/60	EE320/75/20
尺寸 Dimension (mm)	A	110.00±2.00	130.00±2.00	160.00±2.00	186.00±2.00	195.00±2.00	320.00±5.00
	B	74.20 min	90.00 min	118.00 min	126.00 min	133.00min	217.00min
	C	36.00±1.00	40.00±0.50	38.00±0.80	55.00±0.50	60.00±0.50	100.00±2.50
	D	40.00±0.80	40.00±0.50	40.00±1.00	30.00±0.50	60.00±0.50	20.00±2.00
	E	37.20±1.00	45.00±0.50	52.00±0.50	48.00±0.60	49.50±0.50	75.00±1.50
	F	56.00±0.50	65.00±0.50	70.00±1.00	78.00±0.60	79.50±0.50	125.00±0.50
磁芯常数 $C1(\text{mm}^{-1})$ Core Factor		0.1685	0.183	0.225	0.2033	0.204	0.289
有效磁路长度 $L_e(\text{mm})$ Effective Length L_e		276.8	1600	346.48	5745	1808	577
有效截面积 $A_e(\text{mm}^2)$ Effective Area		1642.6	293	1539	355	368	2000
有效体积 $V_e(\text{mm}^3)$ Effective Volume		454768	468800	533234.8	2039475	666434	115000
重量 Weight(g)		1820	2560	2705	3110	6910	5995
电感系数 $AL (\text{nH}/\text{N}^2)$	PC40	12300±25%	1136±25%	8900±25%	10230±25%	10210±25%	7350±25%
	PC44						
	TY-5K						
	TY-7K						
	TY-10K						
	TY-15K						



型号 Type		EE320/107/37.5					
尺寸 Dimension (mm)	A	320.00±2.50					
	B	238.00min					
	C	80.00±1.00					
	D	37.50±0.50					
	E	107.00±0.70					
	F	150.00±0.70					
磁芯常数 $C1(\text{mm}^{-1})$ Core Factor		0.229					
有效磁路长度 $L_e(\text{mm})$ Effective Length L_e		3091					
有效截面积 $A_e(\text{mm}^2)$ Effective Area		708					
有效体积 $V_e(\text{mm}^3)$ Effective Volume		2188407					
重量 Weight(g)		10944					
电感系数 $AL(\text{nH}/\text{N}^2)$	PC40	9080±25%					
	PC44						
	TY-5K						
	TY-7K						
	TY-10K						
	TY-15K						